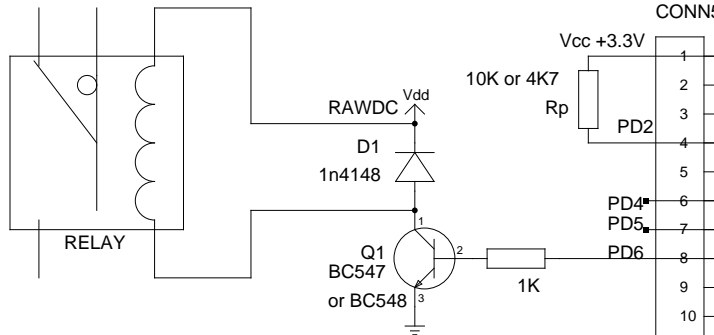


Tuxgraphics Smartphone Garage Door Opener

(1 to 4 doors can be operated by a single board)

This third and fourth door connect in the same way as the second door but to PD5 and PD4

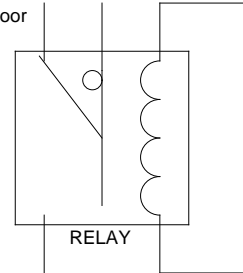
Second door



First door

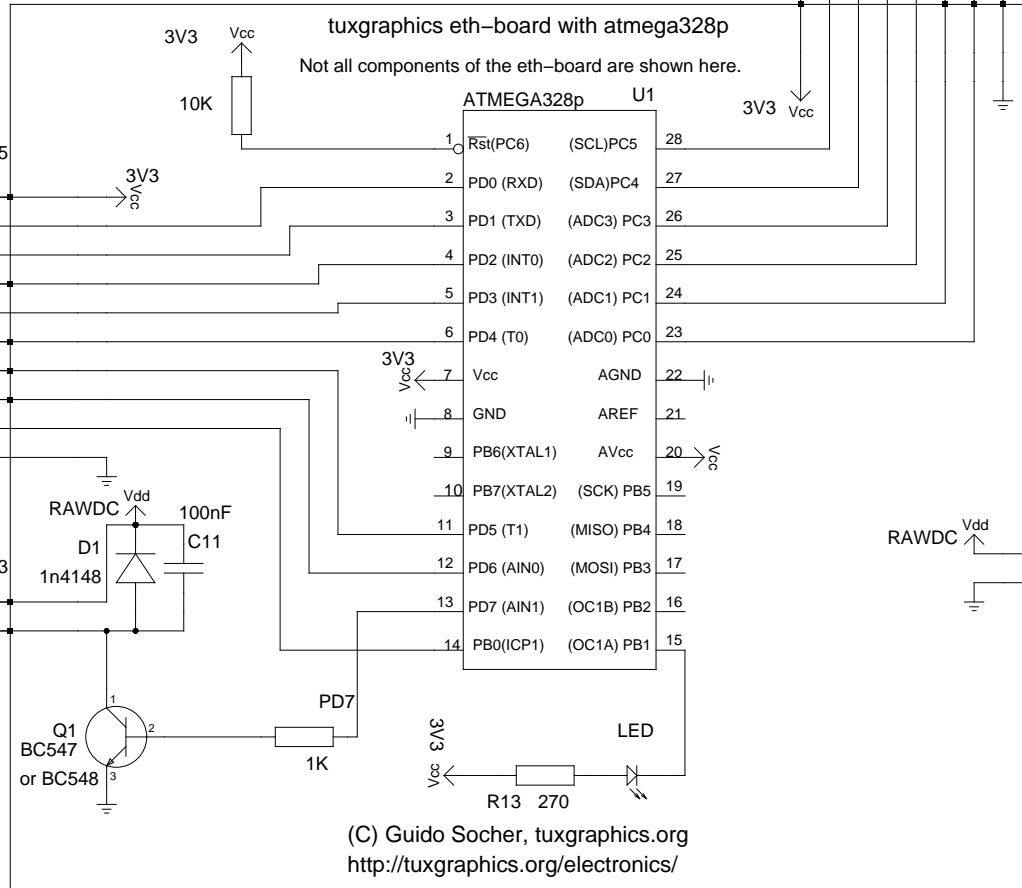
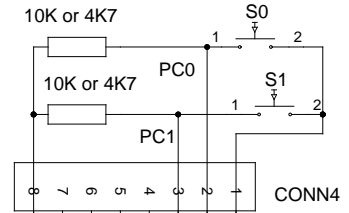
All relays are small 5V or 6V relays.

Recommended power supply voltage for the board: Vdd= 5-6V DC



The door sensors for the third and fourth door connect to PC2 and PC3 in the same way as shown for the first and second door.

Door sensor switches.
Door closed = switch closed.



(C) Guido Socher, tuxgraphics.org
<http://tuxgraphics.org/electronics/>